

Complete control of your company telecom budget

# MA4000 Budget Management

## Complete and comprehensive control of organizational telecom budgets

**With telecom costs topping the list of corporate expenditures, a proactive budget management strategy becomes the foundation to any successful telecom expense management plan.**

MA4000 Budget Management provides you the tools needed for complete and comprehensive control of organizational telecom budgets. With MA4000 Budget Management, you can easily define budgets for extensions or persons, define criteria such as call type and time frame and deliver system alerts via email. All definitions and administration of budgets and related alerts is done through an intuitive user interface.

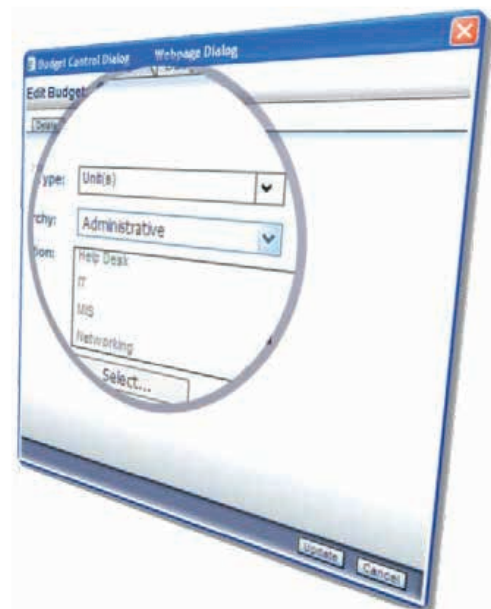
### Tight control of telecom budgets

MA4000 Budget Management provides you with the tools you need for a complete and comprehensive control of organizational telephone budgets. Budgets are defined within organizational and departmental hierarchy and set at the beginning of the financial year, or any period you define.

As telecom usage is automatically logged and related expenses are input, MA4000 Budget Management acts in a proactive manner: keeping a constant watch as budgets are consumed and providing alerts for budget exceptions as they are identified.

### Saving company time and money

MA4000 Budget Management's ultimate aim is to improve processes and save money through constant visibility. The NEC philosophy is incorporated into the tool with alerts and best practices surrounding the following:



### At a Glance

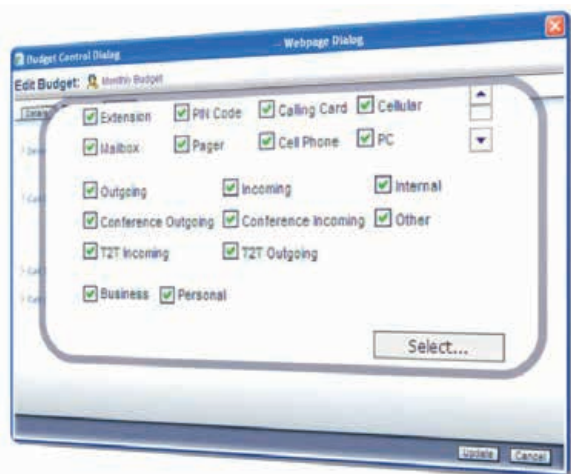
- > Avoid unknowingly exceeding planned budgets with automated alerts
- > Transparency encourages compliance, management and best practices
- > Tight control of telecom budgets
- > Saving company time and money
- > Ready-to-go management reports and automatic alerts
- > Simple and easy to use
- > Increased employee awareness of spending
- > Dashboards

# MA4000 Expense Management solution

## Ready-to-go management reports and alerts

The reports and notifications included in MA4000 Budget Management are the mechanisms that ensure your budgets do not stray from their defined framework. They include:

- > Automatic early warning alerts
- > Periodic status reports automatically emailed to managers
- > Management and business unit summary reports
- > Automatic email notifications of exceptions
- > Export options to Excel, Word and other file types—all can be transmitted via email



## Simple and easy to use

The reports and notifications included in MA4000 Budget Management are the mechanisms that ensure your budgets do not stray from their defined framework. They include:

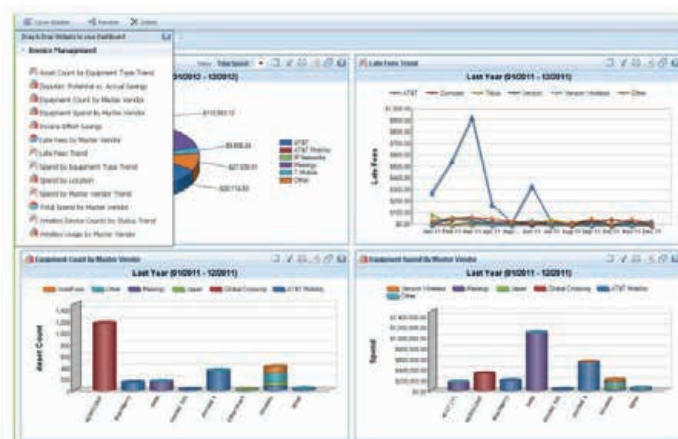
- > Automatic early warning alerts
- > Periodic status reports automatically emailed to managers
- > Management and business unit summary reports
- > Automatic email notifications of exceptions
- > Export options to Excel, Word and other file types - all can be transmitted via email

## Increased employee awareness of spending

When employees know they have a given budget for their calls, they tend to become considerably more careful and more aware about their telephone usage. With this increased corporate, departmental and individual visibility, most companies are able to reduce the overall telecom expenditure and bring the actual telecom spend closer to the planned budget.

## Dashboards

The Dashboards provide business intelligence for your fixed and mobile telecom environment to mitigate risk and to increase efficiency and visibility. The dashboard, benchmarking and reporting tools deliver real-time, relevant data to the right people for spend, invoices, assets, contracts and usage management.



## Total integration with MA4000 Expense Management

MA4000 Budget Management is fully integrated with other MA4000 Expense Management modules including; Call Accounting, Asset Management, Wireless Management, Procurement and Help Desk and Mobile Device Management (MDM).

The MA4000 Expense Management solution is available on a SaaS, licensed or outsourced managed service basis.

